



WORLDWIDE ELECTRIC MOTOR DATA SHEET

PEWWE400-18-586/7



HORSEPOWER	400
RPM / POLES	1800 / 4
VOLTAGE / PHASE	460 V / 3
FRAME	586/7
ENCLOSURE / DEGREE OF PROTECTION	TEFC / IP55
FREQUENCY	60 HZ
FULL LOAD SPEED	1790 RPM
SERVICE FACTOR	1.15
INSULATION CLASS	F
FULL LOAD AMPS	428 A
LOCKED ROTOR AMPS (STARTING)	2900 A
NO LOAD CURRENT	95 A
NEMA CODE LETTER	G
EFFICIENCY / POWER FACTOR	<u>LOAD</u> <u>EFF.</u> <u>P.F.</u>
	100 % 96.2% 0.91
	75 % 96.3% 0.90
50 % 96.0% 0.86	
DUTY CYCLE	S1 / Continuous
TORQUE	<u>FULL LOAD</u> <u>LRT</u> <u>BDT</u>
	1173 lb.ft. 200% 250%
SLIP	0.56 %
NEMA DESIGN	B
MOMENT OF INERTIA	178 lb.ft. ²
MAX. TIME LOCKED ROTOR (Hot)	20 Seconds
SOUND PRESSURE LEVEL	92 dB (A)
MAX. AMBIENT TEMPERATURE	40° C
MAX. ELEVATION	3300 Ft.
TEMPERATURE RISE (At Full Load)	80° C
DE BEARING	NU326 C3
ODE BEARING	6324 C3
REGREASING INT. - DE BEARING	1,000 Hours
REGREASING INT. - ODE BEARING	1,500 Hours
GREASE TYPE	LGHP2 (SKF)
MOUNTING	F1
ROTATION	Bi-Directional
SHAFT MATERIAL	4140 Carbon Steel
INVERTER RATING	10:1 CT / 20:1 VT PWM Type
CONNECTION DIAGRAM	575 V - 6 Lead Δ
AREA CLASSIFICATION	Class I, Division 2, Groups A, B, C, D
APPROXIMATE WEIGHT	4374 lbs.

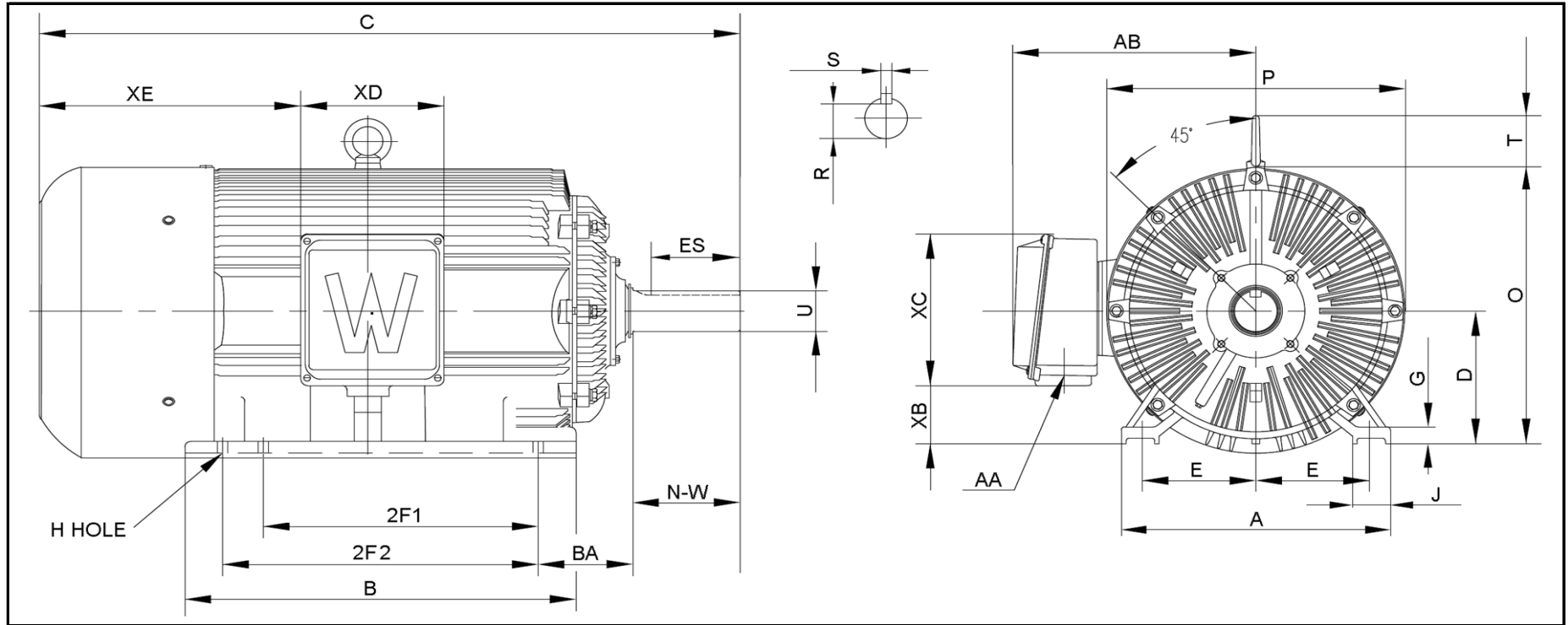


REVISED - JUNE 18, 2018



WORLDWIDE ELECTRIC MOTOR DRAWING

PEWWE-586/7



DIMENSIONS - INCHES

MOUNTING					A	B	C	D	G	J	P	O	T	AB
E	2F1	2F2	H	BA										
11.5	22	25	1.125	10	28	33.85	66	14.5	2.05	5	30.5	28.9	5	25

KEY		KEYSET	SHAFT		TERMINAL BOX				
S	ES	R	N-W	U	AA	XB	XC	XD	XE
1	10	3.309	11.625	3.875	2 x 3"	5	16.5	14.5	---

PERFORMANCE CURVES

WorldWide Electric Corporation

1 (800) 808-2131

Worldwideelectric.net



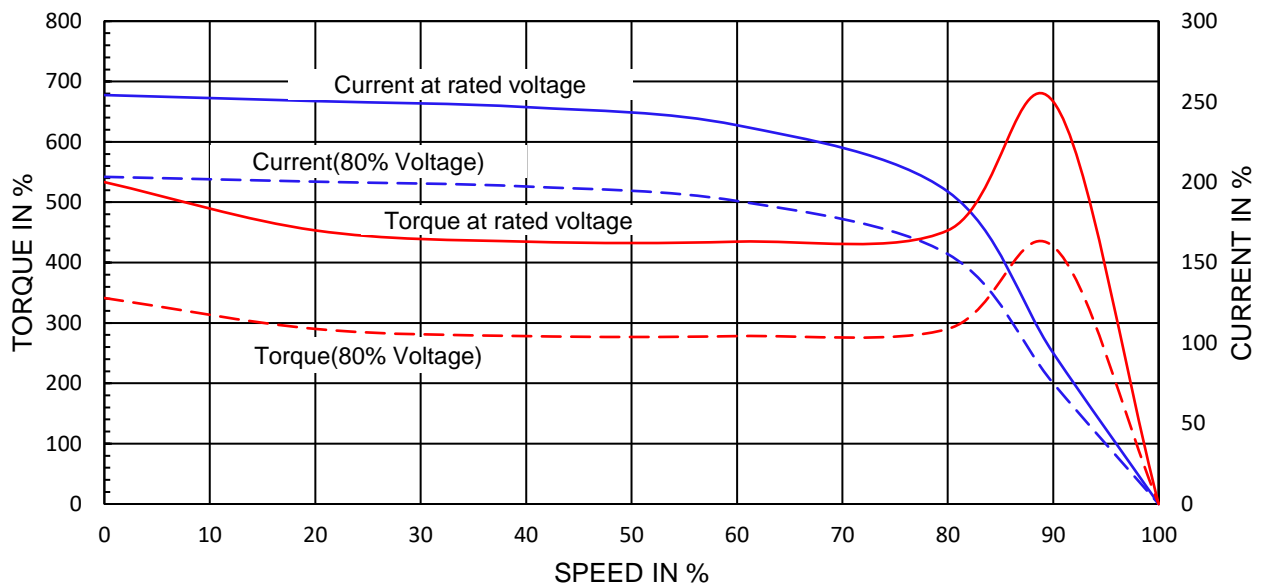
Premium Efficiency Motor:

PEWWE400-18-586/7

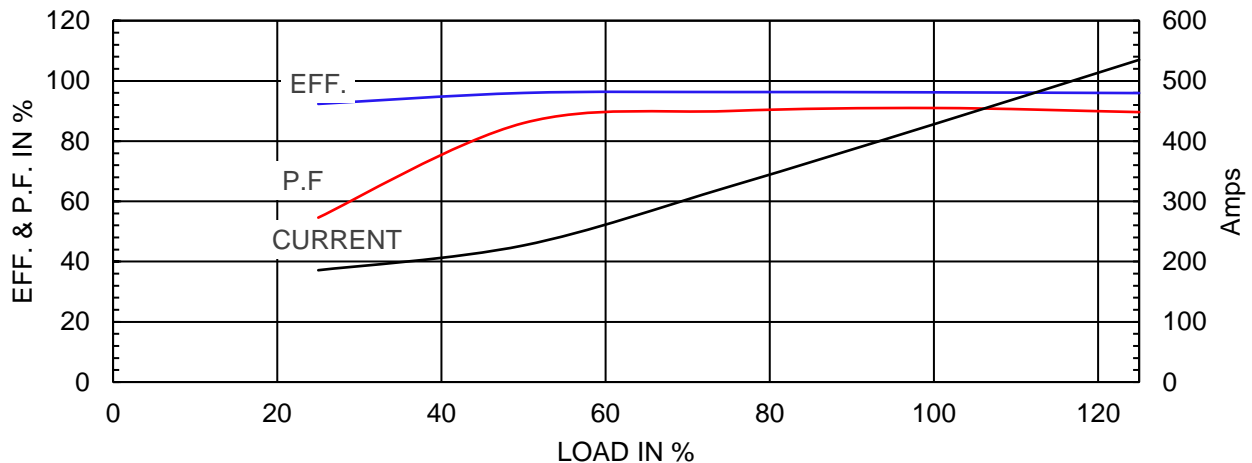
Document Generated: 25-Jun-2020	Customer:
Document ID:	

Motor Type	PEWWE		FL Speed	1790	
Output Rating (HP)	400		LRT (%FLT)	200	
Full Load Torque	1173	lb.ft	460 volt FLA	428	
Rotor Wk^2	178	lb-ft^2	230 volt FLA	A	
			BDT (%FLT)	250	

SPEED VS TORQUE & CURRENT CURVE



OUTPUT VS EFF., P.F. & CURRENT CURVE






NAMEPLATE / WIRING

Premium Efficiency Motor: **PEWWE400-18-586/7**

Document Generated: 14-Oct-2019
 Document ID:

Customer:

SAMPLE NAMEPLATE DATA

 		PREMIUM EFFICIENCY 3-PHASE INDUCTION MOTOR			259277 	CC006A ISO9001	
Model	PEWWE400-18-586/7	Ser No.	ZP				
HP	400	S.F.	1.15	Type		Encl	TEFC IP55
Frame	586/7	P.F.	0.91	Ins Cl	F	Rating	40°C Amb Cont
Voltage	460 V	Hz	60 Hz	Design	B	DE Brng	NU326 C3
Amps	428A	RPM	1790	Code	G	ODE Brng	6324 C3
Nom. Eff.	FL 96.2 %	3/4 96.3 %	460	V		Date	
Class I Division 2 Groups A B C D				Amb. 40°C		T3(200°C)	
10:1 CT 20:1 VT PWM VFD 1.0SF							
WorldWide Electric Corporation							

Connection

6	4	5
1	2	3
L1	L2	L3

